



## MRL Back n Black

**Date of Birth:** 10/21/2014  
**Registration 2:** C1296345  
**Breeder:** Tom & Shana Miller-Miller Ranch  
**Owner:** Longhorns  
Circle H Ranch



*Courtesy of Circle H Ranch*

This cow has been DNA tested by UC Davis California to be Dominant black over Dominant Wild Gene. This means that all of this cows offspring will either be born black or will be born red then turn black. This is as good as being homozygous black. Solid black JP Grand Marshall young heifer with a lot of flat horn & genetic potential.

**TTT:** 56.5000 on 09/22/2017

MRL Back n Black



JP Grand Marshall



In The Black



J.R. GRAND SLAM

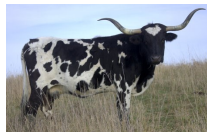


JKC Roancie

MILE MARKER



Just Score



GUNMAN



J.R. SEQUENTIAL



OVERWHELMERS JACK KCC



Jans KCC

THE SHADOW



Unchecked



Just Cause



Score More



<http://www.hiredhandsoftware.com>